

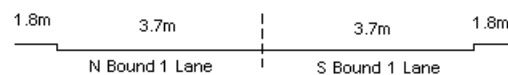
YEAR 2015

COVERAGE (B) STATION 2401

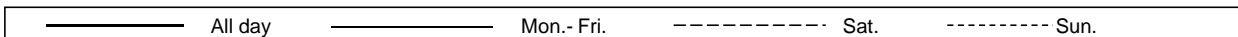
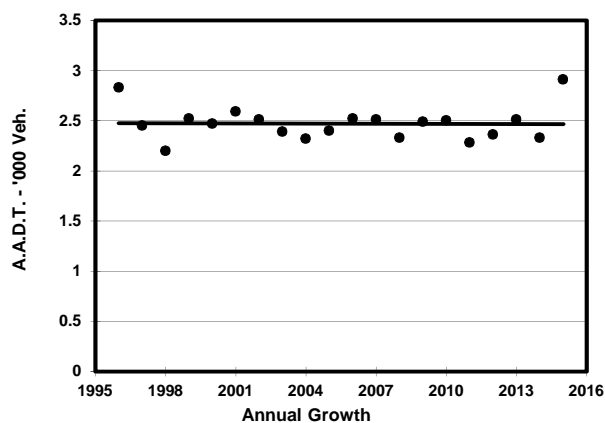
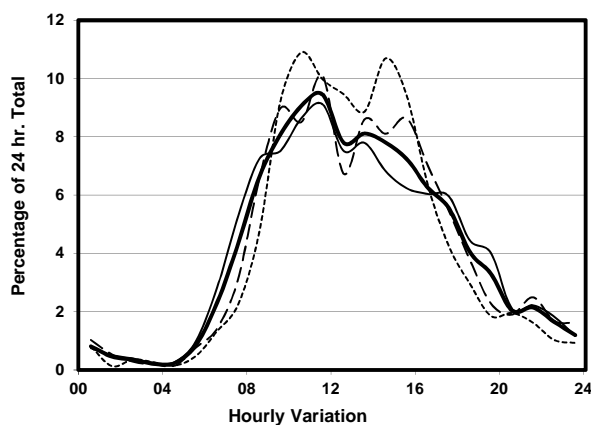
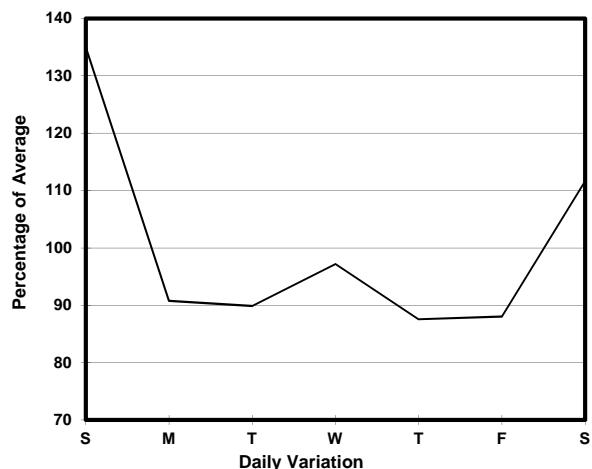
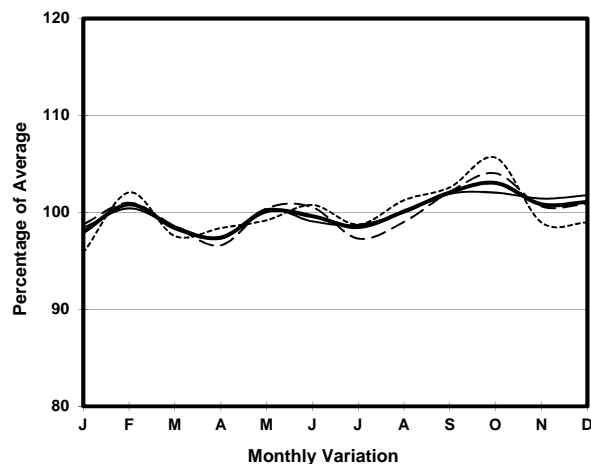
ROAD NETWORK MINOR

ROAD TYPE LOCAL DISTRIBUTOR

LINK LIN SHING RD (from WAN TSUI RD to CAPE COLLISION RD)



## 1. TRAFFIC FLOW VARIATION AND GROWTH



## 2. TRAFFIC CHARACTERISTICS (BY DIRECTION)

Parameter	All - Day	Mon. - Fri.	Sat.	Sun.
<b>SOUTH BOUND</b>				
A.A.D.T.	2620	2370	2770	3400
R 12 / 24 - %	82.8	81.1	84.2	87.9
R 16 / 24 - %	92.9	92.2	93.1	95.2
AM Peak Hour	0900-1000	0800-0900	0900-1000	0900-1000
One-way flow at AM peak hour	210	180	250	320
T - % (AM)	-	9.5	-	-
PM Peak Hour	1600-1700	1700-1800	1600-1700	1600-1700
One-way flow at PM peak hour	160	140	180	190
T - % (PM)	-	3.7	-	-
Prop.of commercial vehicles - 16 hr.	-	9.2	-	-
<b>NORTH BOUND</b>				
A.A.D.T.	290	220	420	460
R 12 / 24 - %	98.3	98.7	95.2	97.8
R 16 / 24 - %	99	98.7	99.5	97.8
AM Peak Hour	0900-1000	0900-1000	0900-1000	0900-1000
One-way flow at AM peak hour	30	20	40	40
T - % (AM)	-	33.3	-	-
PM Peak Hour	1600-1700	1600-1700	1600-1700	1600-1700
One-way flow at PM peak hour	30	20	40	50
T - % (PM)	-	-	-	-
Prop.of commercial vehicles - 16 hr.	-	6.3	-	-

## 3. OTHER INFORMATION AND COMMENT

**4. Vehicle classification and occupancy - Monday to Friday**

Time		Class of vehicle									
		Motor	Private	Taxi	Private	PLB	Goods veh.		Non	Fr. Bus	
		Cycle	Car		LB		Light	M & H	Fr. Bus	SD	DD
0700-0800	Pro	9.8	31.7	0.0	4.9	9.8	41.5	2.4	0.0	0.0	0.0
	Ocp	1.0	1.2	0.0	13.5	13.0	2.5	1.0	0.0	0.0	0.0
0800-0900	Pro	10.6	42.6	10.6	4.3	12.8	10.6	6.4	2.1	0.0	0.0
	Ocp	1.0	1.7	2.2	8.5	14.8	2.0	1.7	6.0	0.0	0.0
0900-1000	Pro	0.0	28.1	21.1	5.3	8.8	28.1	7.0	1.8	0.0	0.0
	Ocp	0.0	1.6	2.8	4.0	13.8	1.9	1.0	10.0	0.0	0.0
1000-1100	Pro	0.0	30.8	30.8	6.2	6.2	18.5	4.6	3.1	0.0	0.0
	Ocp	0.0	2.4	3.2	1.8	11.8	1.5	1.3	26.5	0.0	0.0
1100-1200 Peak hour	Pro	5.8	36.2	23.2	2.9	4.3	18.8	1.5	7.2	0.0	0.0
	Ocp	1.0	2.3	2.6	6.5	6.7	2.1	1.0	9.8	0.0	0.0
1200-1300	Pro	4.3	43.5	23.9	2.2	4.3	15.2	4.3	2.2	0.0	0.0
	Ocp	1.0	2.3	2.6	1.0	10.5	1.7	1.5	10.0	0.0	0.0
1300-1400	Pro	5.7	30.2	20.8	1.9	3.8	24.5	5.7	7.5	0.0	0.0
	Ocp	1.3	1.9	2.4	1.0	17.0	2.8	1.3	1.0	0.0	0.0
1400-1500	Pro	4.3	30.4	28.3	0.0	6.5	15.2	8.7	6.5	0.0	0.0
	Ocp	1.0	1.9	1.7	0.0	12.0	2.0	1.8	2.3	0.0	0.0
1500-1600	Pro	6.1	30.3	18.2	6.1	9.1	15.2	6.1	9.1	0.0	0.0
	Ocp	1.0	2.1	3.2	4.0	11.3	1.8	1.0	15.7	0.0	0.0
1600-1700	Pro	2.5	32.5	22.5	7.5	5.0	25.0	0.0	5.0	0.0	0.0
	Ocp	1.0	1.2	1.7	3.7	12.0	1.4	0.0	1.5	0.0	0.0
1700-1800	Pro	10.3	33.3	28.2	7.7	10.3	7.7	0.0	2.6	0.0	0.0
	Ocp	1.0	1.5	1.1	1.3	7.5	2.7	0.0	4.0	0.0	0.0
1800-1900	Pro	4.3	56.5	8.7	0.0	8.7	8.7	4.3	8.7	0.0	0.0
	Ocp	1.0	1.3	2.0	0.0	15.0	1.0	3.0	3.0	0.0	0.0
1900-2000	Pro	3.8	42.3	15.4	0.0	11.5	19.2	3.8	3.8	0.0	0.0
	Ocp	1.0	1.6	1.8	0.0	17.0	1.6	1.0	1.0	0.0	0.0
2000-2100	Pro	0.0	46.7	20.0	0.0	6.7	26.7	0.0	0.0	0.0	0.0
	Ocp	0.0	1.6	1.3	0.0	5.0	1.5	0.0	0.0	0.0	0.0
2100-2200	Pro	0.0	62.5	12.5	0.0	6.3	0.0	18.8	0.0	0.0	0.0
	Ocp	0.0	1.6	1.5	0.0	15.0	0.0	1.3	0.0	0.0	0.0
2200-2300	Pro	7.1	50.0	21.4	0.0	14.3	7.1	0.0	0.0	0.0	0.0
	Ocp	1.0	1.1	2.0	0.0	8.5	1.0	0.0	0.0	0.0	0.0
16 hours	Pro	4.8	36.2	20.3	3.7	7.5	19.0	4.4	4.1	0.0	0.0
	Ocp	1.0	1.8	2.3	4.4	12.2	2.0	1.4	7.7	0.0	0.0

**Legend**

**Pro.** Proportion of vehicles in % (Sum may not add up to 100% due to figure rounding)\*

**Ocp.** Average occupancy of vehicles including both driver and passengers\*

**M&H** Medium and Heavy

\* All traffic data are collected from combined bounds except for one way traffic